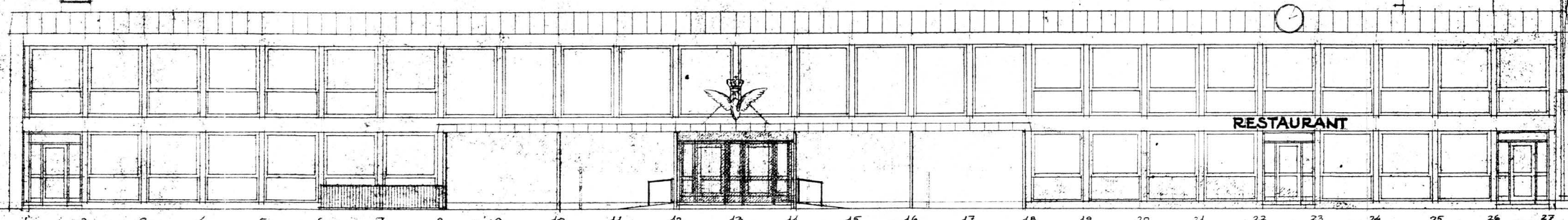


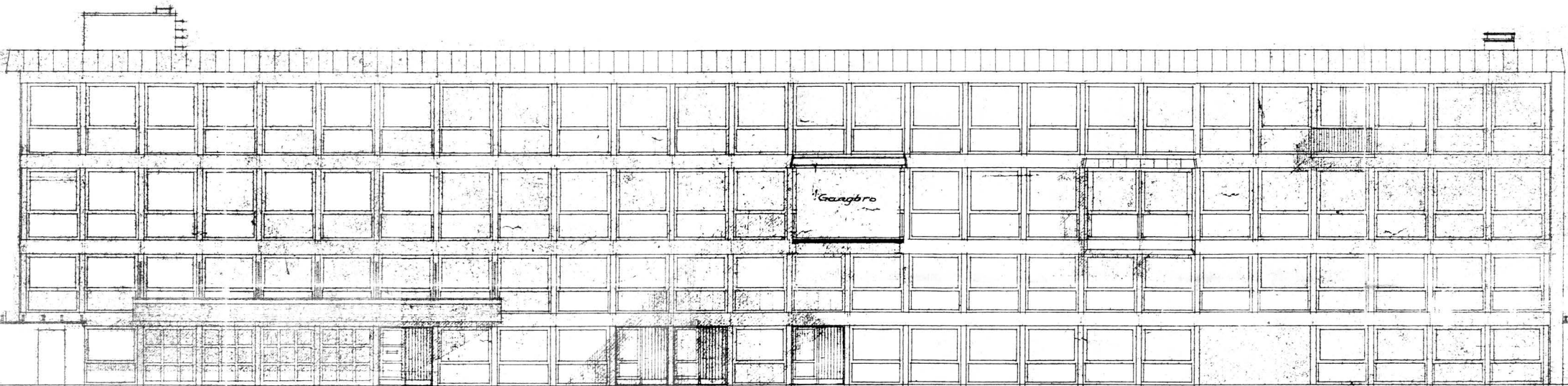


15 m. flagstang

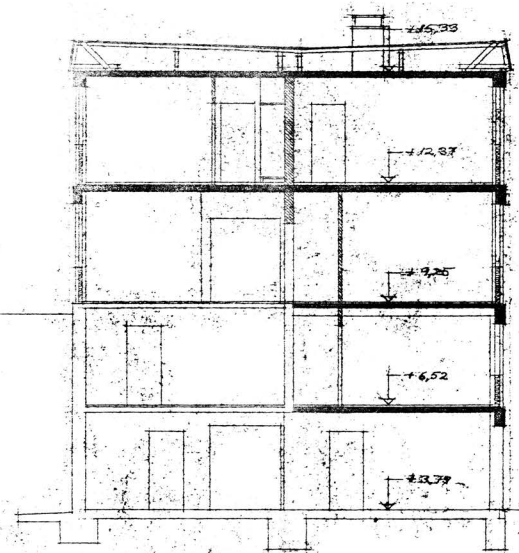


Facade mod nord.

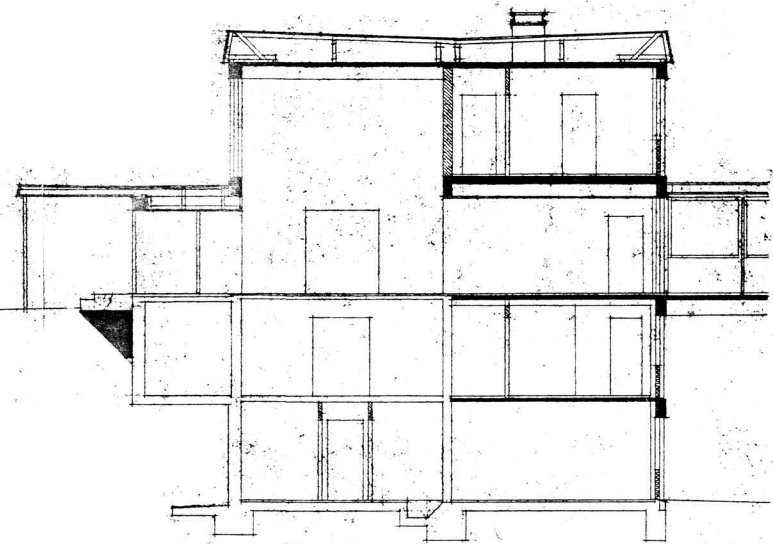
Set fra siden



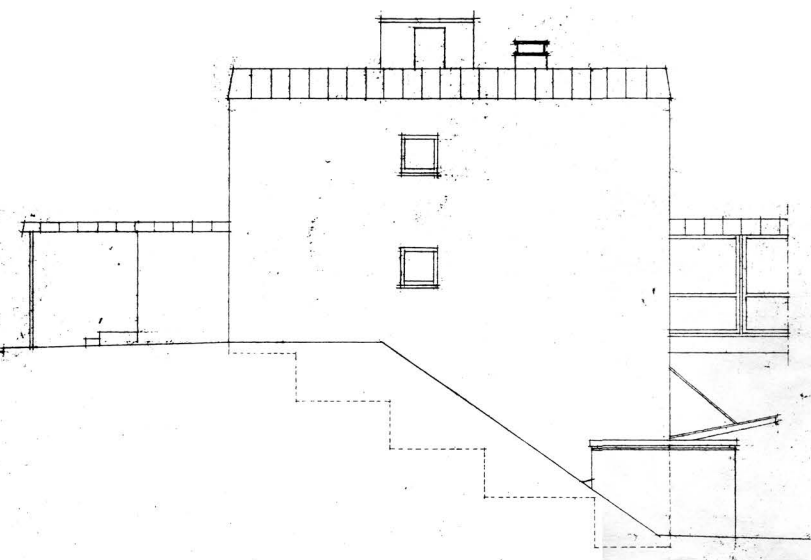
Facade mod syd.



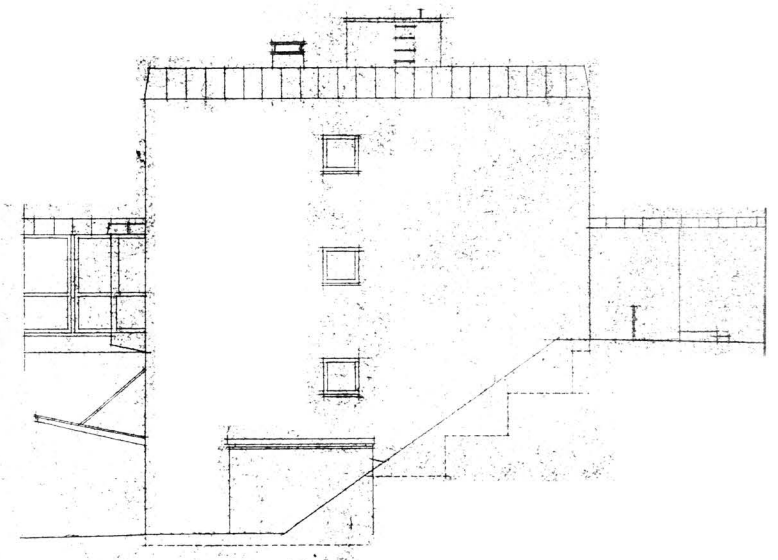
Snit i fag 5-6



Snit i fag 12-13



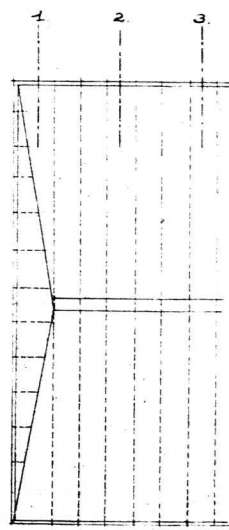
Gavl mod vest



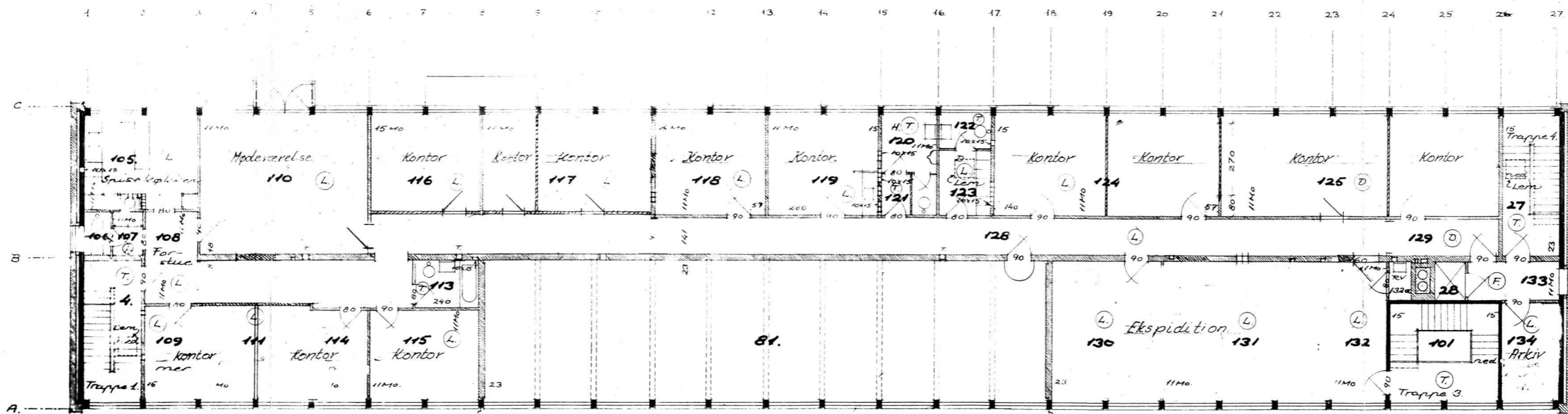
Gavl mod øst.

B-250/6043
1 0 1 2 3 4 5 6 7 8 9 10 15 20 25 30 m

DSB
BANEAFDELINGEN
OVERARKITEKTEN
2.11.1959
Haustrup 185/1
SKIVE H. STATION
HOVEDBYGNING
Facader og snit
1:100 185/1
A2/4413B
a.d. 25-7-60
2.11.7.62

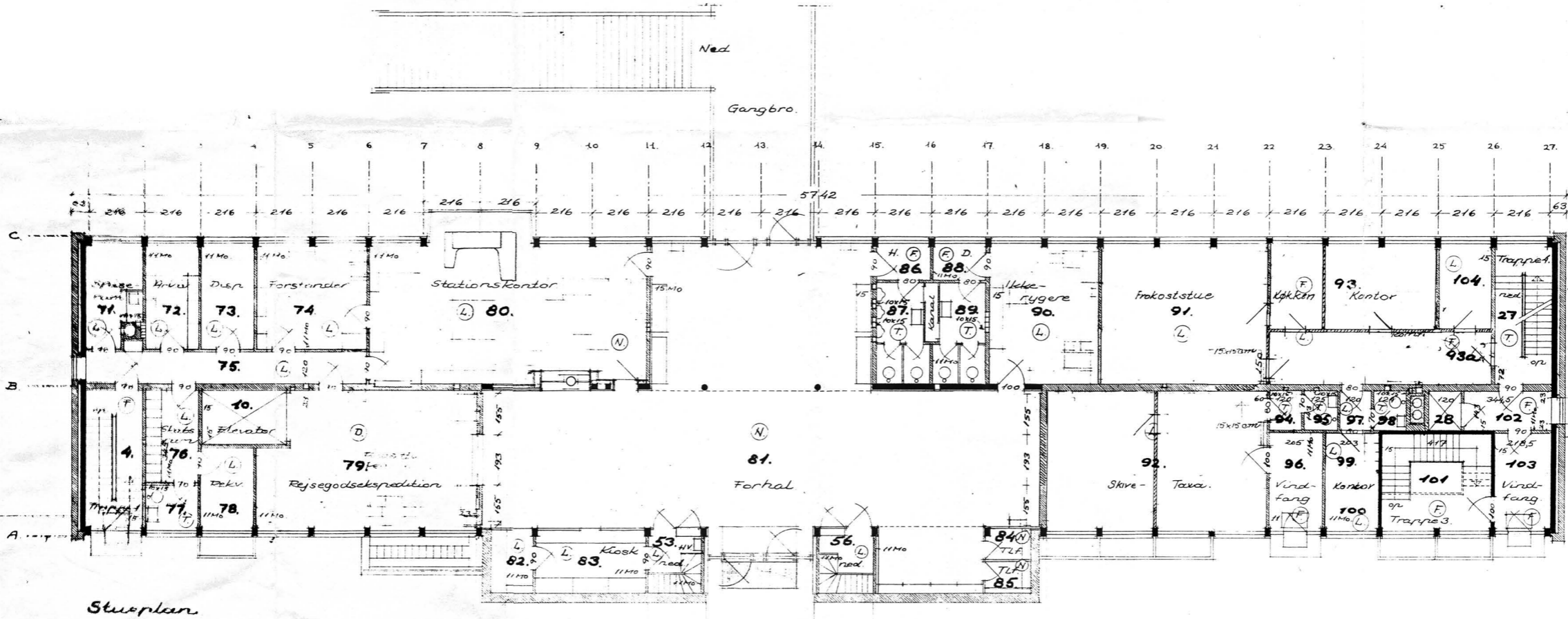


Sperinddeling.



Plan af 1'sal

1'sal



Stueplan

A
Ned

SIGNATURER FOR GULVBELEGNING:

- A Asfalt
- B Beton
- D Dagsfliser
- F Fliser
- L Lincleurn
- N Natursten
- T Terazzo

NB! Vedr murede tværskillevægges placering i forhold til systemlinier henvises til tegninger i mål 1:20.

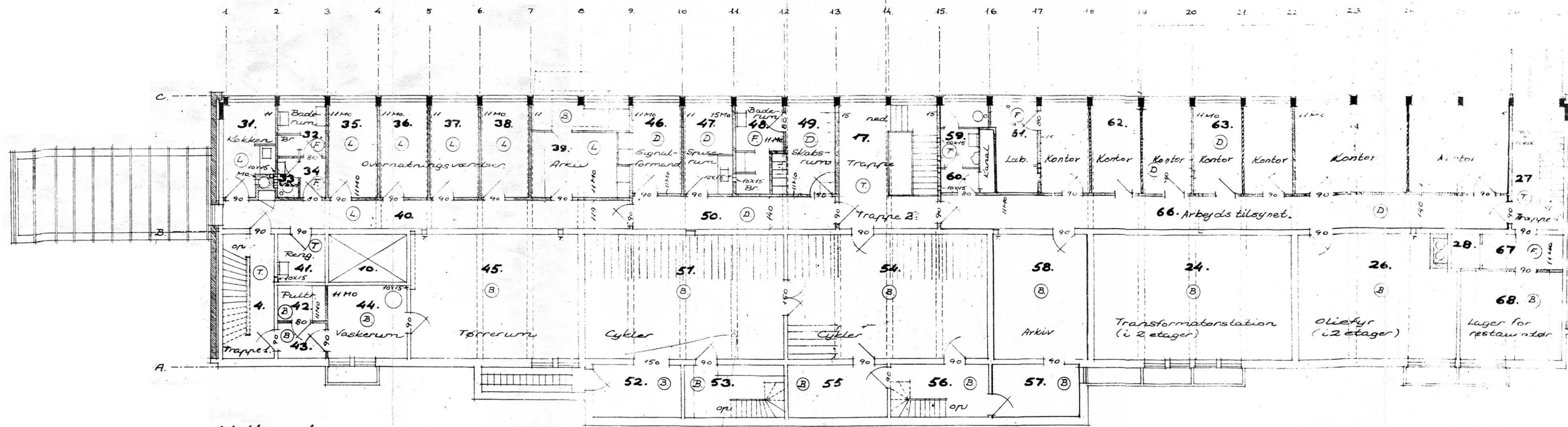
Revideret april 64

33605

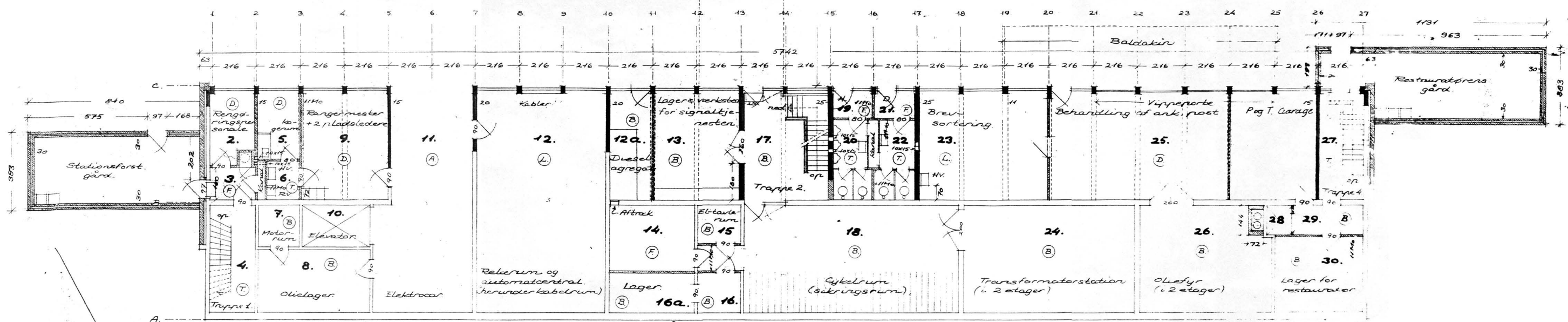
12

DSB
BANEAFDELINGEN
OVERARKITEKTEN
2.12.1960.
2.11.1959.

SKIVE H. STATION.
HOVEDBYGNING.
Plan af stue og 1'sal. 11.7.60.
1:100 185/L
A2/1112a

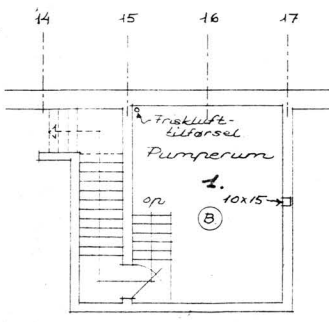


Mellemetage.



Perronetage.

NB! Vedr. murede tværskillevægges placering i forhold til systemlinier, henvises til tegningen i mål 1:20.



Kælder

SIGNATUR FOR GULVBELÆGNING:

- (A) Asfalt
- (B) Beton
- (D) Dagsfliser
- (F) Fliser
- (L) Linoлеum
- (N) Natursten
- (T) Terrazzo